



ENVIRONMENT HEALTH & SAFETY POLICY COMMITMENTS

Dept : EHS Department	Revision Date	24.01.2024
Approved By : GM EHS	Revision No.	00

Policy Statement:

Manjushree Technopack Limited (MTL) is dedicated to operating with a commitment to sustainable development principles, aiming to reduce environmental impact and safeguard the well-being of our employees, service providers, contractors, distribution and logistics partners, suppliers, neighbouring communities, and customers through our **Environmental, Health & Safety (EHS) Policy**.

Scope:

This policy applies to all activities, products, and services conducted by MTL and encompasses all locations where our operations take place.

We are committed to taking proactive measures by:

- Adhering to all EHS statutory requirements and laws, recognizing compliance with statutory EHS requirements as the baseline performance standard. We are dedicated to exceeding these requirements and embracing more stringent standards.
- Integrating EHS into business decisions to proactively safeguard the health and safety of our employees and communities, while also advocating for environmentally sustainable practices.
- Minimizing waste and emissions, encouraging material reuse and recycling, promoting the adoption of renewable energy, reducing greenhouse gas emissions, and conserving energy and water whenever feasible to lessen our environmental impact. We actively strive to preserve biodiversity, including the habitats surrounding our environment.
- Establishing health and safety standards to cultivate a secure and healthy workplace, consistently working to minimize hazards and risks to prevent workplace injuries and illnesses.
- Communicating both adherence to and deviations from compliance to relevant regulatory bodies and other stakeholders, accompanied by prioritized actions to rectify non-compliance.
- Communicating this policy to employees, customers, shareholders, suppliers, the community, and other stakeholders. MTL EHS Standards, Procedures, and other resources empower employees to implement this policy and share best practices throughout MTL, promoting continuous improvement and enhancing environmental, health, and safety performance.

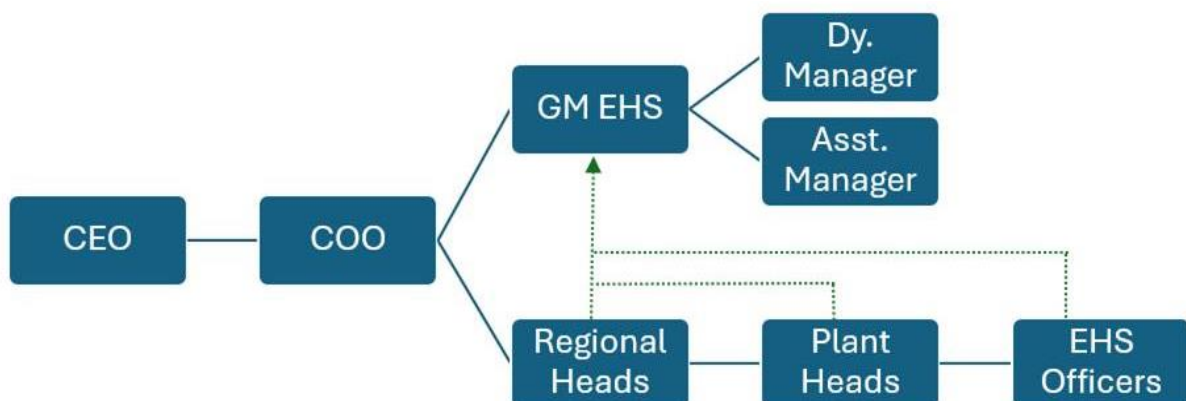


ENVIRONMENT HEALTH & SAFETY POLICY COMMITMENTS

Dept : EHS Department	Revision Date	24.01.2024
Approved By : GM EHS	Revision No.	00

For the Effective Implementation EHS policy, MTL shall:

- **Establish Objectives and Targets:** Our organization is dedicated to exceeding industry standards by setting targets, developing, implementing, and maintaining management systems for continuous improvement, surpassing legal obligations and other requirements.
- **Regular Monitoring:** Regular EHS review meetings will occur on a monthly basis, involving plant heads and their respective EHS personnel. The analysis of EHS objective achievements will be closely monitored, and necessary actions will be implemented as needed.
- **Periodic Review of EHS Policy and EHS Plan:** The EHS policy will undergo an annual review, and if any adjustments are necessary, the policy will be upgraded accordingly. The objectives will be updated based on annual trends, and the plant team will formulate site-specific plans to achieve these objectives.
- **Transparent Communication:** We are committed to transparently communicating our environmental Health & Safety commitment and organizational performance to stakeholders. This includes sharing information on achievements, challenges, and ongoing improvement initiatives.
- **Organizational Structure for EHS Policy Compliance:** To ensure effective EHS policy implementation, we adhere to a robust organizational structure.





ENVIRONMENT HEALTH & SAFETY POLICY COMMITMENTS

Dept : EHS Department

Revision Date

24.01.2024

Approved By : GM EHS

Revision No.

00

Management will provide the necessary resources, support, and oversight and Compliance with this Policy will be regularly monitored and evaluated by ESG Steering Committee.